



Partnering with Public Health

Matthew D. Whitson, RN

October 24, 2024

Screening & Treating Tuberculosis Infection

October 24, 2024

San Antonio, Texas

Matthew D. Whitson, RN has the following disclosures to make:

- No conflict of interests
- No relevant financial relationships with any commercial companies pertaining to this educational activity





TEXAS
Health and Human
Services

Texas Department of State
Health Services

Partnering with Public Health

Matthew D. Whitson, RN
Communicable Disease Nurse Consultant
TX DSHS, Public Health Region 8



TEXAS
Health and Human Services

Texas Department of State
Health Services

Objectives

- Identify the role of public health in Tuberculosis (TB) prevention and care.
- Discuss opportunities to collaborate with your local health department (HD) in the following areas:
 - Medical consultation
 - Referral of cases
 - Training and education

Public health role in TB prevention and care



TEXAS

Health and Human Services

Texas Department of State
Health Services

- Evaluate, diagnose, and treat patients with TB disease.
- Interview patients with TB to identify individuals who may have been exposed to TB.
- Find, test, and treat individuals who have been exposed to TB.



Public health role in TB prevention and care



TEXAS
Health and Human Services

Texas Department of State
Health Services

- Evaluate patients referred through the CDC's Electronic Disease Notification (EDN) system.
- Educate communities and healthcare providers about TB and TB infection.





TEXAS
Health and Human Services

Texas Department of State
Health Services

Medical Consultation Opportunities

- Patients may have complex co-morbidities
 - Assist in assessing medication regimens interactions
 - Coordinate with TB expert consultants.
- Patients may have test results that conflict with each other.
 - The HD can assist with additional diagnostics
 - sputum collection
 - IGRA
 - Follow-up chest X-ray



TEXAS
Health and Human Services

Texas Department of State
Health Services

Medical Consultation Opportunities

- Patients with unclear history of treatment for TB or TB infection.
 - HD staff coordinates with surveillance staff in Austin to confirm:
 - Hx of TB disease
 - Hx of TB infection
- More remote treatment dates have a lower likelihood of finding records.





TEXAS
Health and Human Services

Texas Department of State
Health Services

Opportunities to refer cases

- A patient diagnosed with TB disease needs medical management in the community.
 - HD staff can manage the patient's course of treatment in tandem with the referring provider.
 - The PCP must still manage other chronic conditions.
 - The PCP remains the medical home.





TEXAS
Health and Human Services

Texas Department of State
Health Services

Opportunities to refer cases

- HD staff provide the following services to the patient:
 - Directly observed therapy (no matter where the patient lives).
 - TB medications.
 - Liver function tests and other basic lab work.
 - Nurse case management.



TEXAS
Health and Human Services

Texas Department of State
Health Services

Opportunities to refer cases

- Patients have contacts who may have been exposed to OR infected with TB.
 - HD staff:
 - Interview the patient
 - Perform home visits to determine individuals who were exposed to TB.
- HD staff will provide testing to individuals exposed to TB AND treatment for TB infection.



TEXAS
Health and Human Services

Texas Department of State
Health Services

Opportunities to refer cases

- Patients may be mobile.
 - HD staff can refer patients who move to the receiving jurisdiction to complete treatment.
 - <http://www.tbcontrollers.org/community/statecityterritory/#.W1D70HmQwy9>



Opportunities for Training and Education



TEXAS

Health and Human Services

Texas Department of State
Health Services

- Reporting TB disease or TB infection is required by state statutes.
- Staff turnover at offices, medical facilities, or correctional facilities may cause issues with reporting.
 - HD staff can act as a resource to let staff know exactly what is needed for reporting and follow-up.

Opportunities for Training and Education

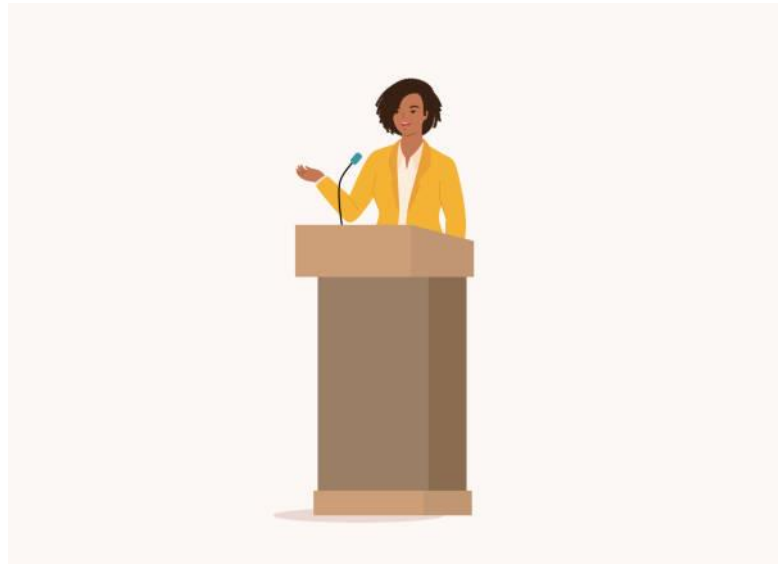


TEXAS

Health and Human Services

Texas Department of State
Health Services

- Community members who hear about a TB “outbreak” may become a little concerned.
- HD staff work with community members and provide presentations and testing to those who may have been exposed to TB.



Opportunities for Training and Education



TEXAS

Health and Human Services

Texas Department of State
Health Services

- Physicians new to the community or hospital may not have an extensive background in TB.
- HD staff can act as a resource to discuss the diagnostic process and provide information to help the clarify the diagnosis.





TEXAS
Health and Human Services

Texas Department of State
Health Services

What the HD DOESN'T do

- Take your patient away from you.
- Treat the patient for other medical ailments that are discovered during the course of treatment for TB.
- Indiscriminately test individuals for TB infection.
- Require individuals to take TB infection treatment.
- Indiscriminately lock up patients to force them to take TB medications.



TEXAS
Health and Human Services

Texas Department of State
Health Services

How you can help us

- If referring your patient to the HD, tell them the HD staff will contact them.
 - Many people think we are scammers
- Explain what TB infection is and that treatment is available
- Patient treatment refusals include
 - "I have immunity to TB due to the BCG vaccine"
 - "My doctor says I don't have TB disease"
 - "TB infection is not a big deal"

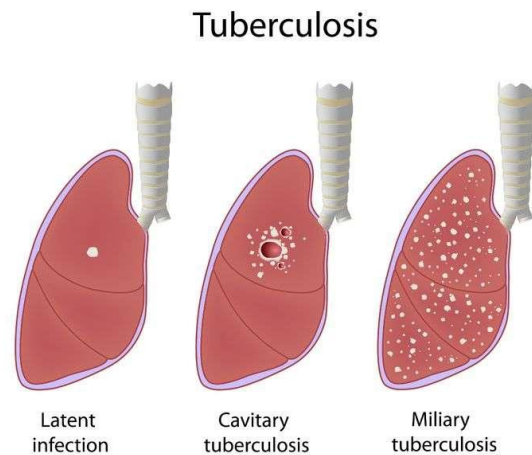
Conclusion



TEXAS
Health and Human Services

Texas Department of State
Health Services

- The TB program of your local HD is here:
 - To help you manage your patients diagnosed with TB or TB infection;
 - To act as a resource for TB related questions and problems that arise; and
 - To build a solid foundation for public and private health partnership.





TEXAS
Health and Human
Services

Texas Department of State
Health Services

Thank you
